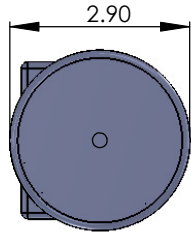


8 7 6 5 4 3 2 1

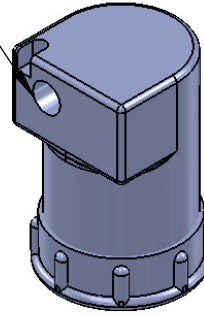
D

D

CABLE EXIT HOLE DIAMETER .32 INCHES



TOP VIEW



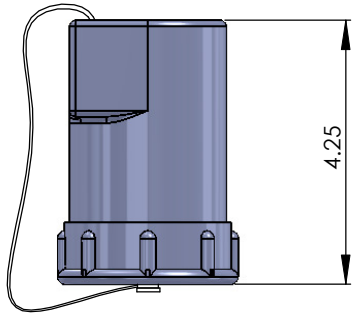
C

C

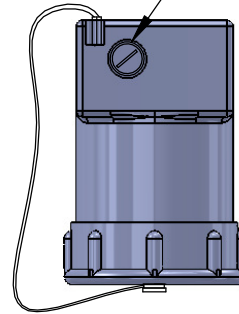
B

B

FUSE ACCESS



4.25



DUST CAP

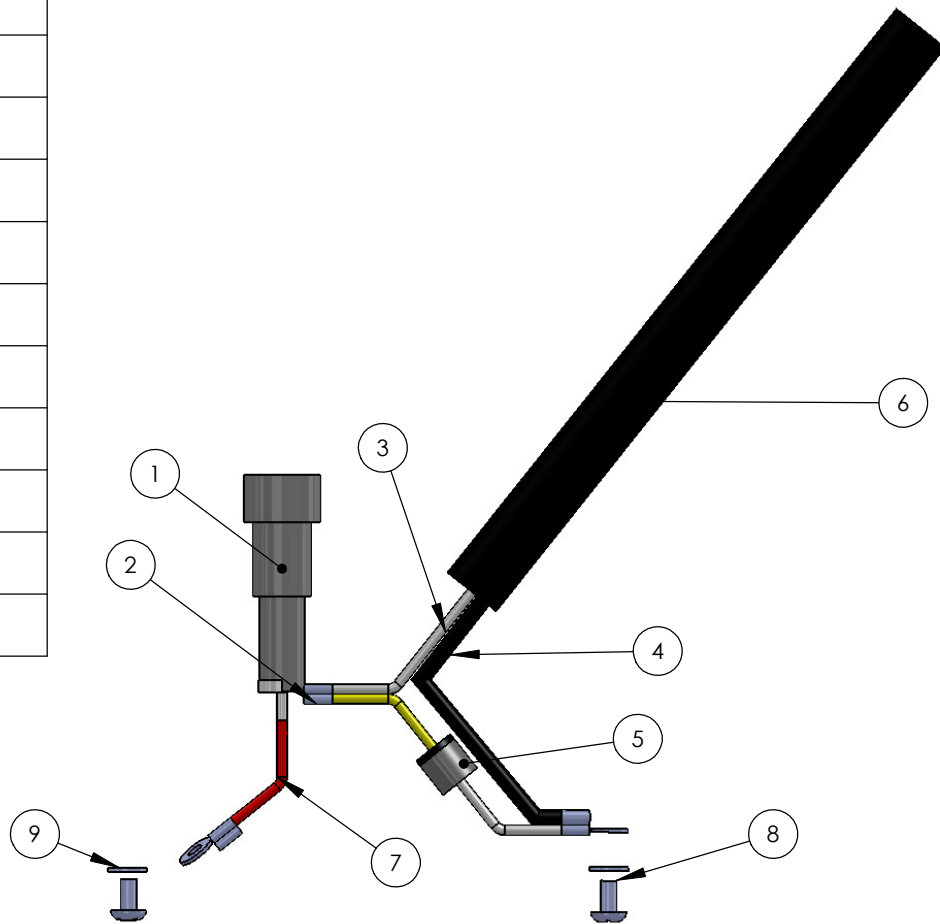
A

A

UNLESS OTHERWISE SPECIFIED:		NAME	DATE	614 CORPORATE WAY SUITE 8M VALLEY COTTAGE, NY 10980 CAGE CODE: 1HJX9	
DIMENSIONS ARE IN: INCHES		DRAWN	DD	02/01/07	TITLE: 15 AMP NATO PLUG WITH 15A FUSE, NO WIRE
TOLERANCES:		CHECKED	RB	02/01/07	
.XX: ± .01 .XXX: ± .005		COMMENTS:			
ANGULAR: .X° .XX°		<p style="text-align: center;">PROPRIETARY AND CONFIDENTIAL</p> <small>THE INFORMATION CONTAINED IN THIS DRAWING IS THE SOLE PROPERTY OF <INSERT COMPANY NAME HERE>. ANY REPRODUCTION IN PART OR AS A WHOLE WITHOUT THE WRITTEN PERMISSION OF <INSERT COMPANY NAME HERE> IS PROHIBITED.</small>			SIZE
INTERPRET GEOMETRIC TOLERANCING PER:					DWG. NO.
MATERIAL					SN-70413-99
FINISH					REV
DO NOT SCALE DRAWING					A
		SCALE: 1:1		WEIGHT:	SHEET 1 OF 2

8 7 6 5 4 3 2 1

ITEM#	PART NO.	DESCRIPTION	QUANTITY
1	SN-BT003	FUSE CASE	1
2	SN-BT002	WIRE CLIP	3
3	N/A	WIRE (WHITE)	1
4	N/A	WIRE (BLACK)	1
5	SN-BT001	DIODE	1
6	N/A	POWER CABLE	1
7	N/A	WIRE (RED)	1
8	SN-BT004	SCREW (0.13"X0.46")	2
9	SN-BT005	WASHER (Ø 0.13)	2
10	SN-BT006	EXTERNAL CAP SCREW (.13" X .57")	5



NOTE:

1. RED WIRE (LIVE) GOES TO CENTER OF THE PLUG
2. BLACK WIRE (GROUND) IS ATTACHED TO THE DIODE.

UNLESS OTHERWISE SPECIFIED:		NAME	DATE	SupplyNet 614 CORPORATE WAY SUITE 8M VALLEY COTTAGE, NY 10980 CAGE CODE: 1HJX9	
DIMENSIONS ARE IN:		DRAWN	AJH		031210
TOLERANCES:		CHECKED	RPB		031210
.XX: ± .XXX: ± ANGULAR: .X ° .XX °		COMMENTS:		TITLE:	
INTERPRET GEOMETRIC TOLERANCING PER:		PROPRIETARY AND CONFIDENTIAL THE INFORMATION CONTAINED IN THIS DRAWING IS THE SOLE PROPERTY OF <INSERT COMPANY NAME HERE>. ANY REPRODUCTION IN PART OR AS A WHOLE WITHOUT THE WRITTEN PERMISSION OF <INSERT COMPANY NAME HERE> IS PROHIBITED.		INTERIOR OF NATO PLUG DETAIL	
MATERIAL	FINISH	DO NOT SCALE DRAWING	SIZE B DWG. NO. SN-70413 REV A	SCALE: 1:5 WEIGHT: SHEET 2 OF 2	